



ALASKA DIVISION OF HOMELAND SECURITY & EMERGENCY MANAGEMENT

SITUATION REPORT 23-325 • November 21, 2023



Toll-Free 1.800.478.2337

Anchorage Area 907.428.7000

SEOC 907.428.7100

<p><u>SEOC Preparedness Level</u></p> <p>Level 2 – Heightened Awareness</p>	<p>http://ready.alaska.gov</p>	<p><u>National Terrorism Advisory System:</u></p> <p>Read the NTAS Bulletin here</p>
<p><u>Maritime Security (MARSEC)</u> Level: 1- Minimum Appropriate Security Measures</p>	<p>WHO Novel Coronavirus Pandemic (COVID-19): 2019 Novel Coronavirus</p>	<p><u>Alaska Military Installation Force Protection Level:</u> FPCON Bravo</p>

(Significant changes from previous situation reports are red.)

Significant Issues:

Wrangell Landslide

- At 8:51PM AKST last night, SEOC was notified by the City and Borough of Wrangell of a landslide on the Zimovia Highway at milepost 11. SEOC recalled staff and moved to SEOC Preparedness Level 2 to support the Wrangell response. Wrangell search and rescue teams responded in coordination with Alaska State Troopers, U.S. Coast Guard, and U.S. Forest Service.
- The City and Borough of Wrangell declared a disaster emergency this morning and SEOC is actively coordinating response support from multiple state and volunteer agencies including the Alaska Department of Transportation and Public Facilities, Alaska Division of Geological, and Geophysical Surveys.
- Governor Dunleavy has declared a state disaster emergency for Wrangell.
- SEOC is deploying a Wrangell Division Supervisor this morning to support the City and Borough and operational coordination among engaged agencies.
- Wrangell Incident Command will be the source for all local incident information.

Alatna Power Outage:

- SEOC was notified of a power outage in Alatna and is working with the Tanana Chiefs Conference (TCC) to support repair response.

Mat-Su Borough 911 Outage:

- SEOC was notified that 911 was unavailable for the Matsu Borough last night due to the power outages and technical issues from the windstorm. 911 service is now restored.

State of Alaska Department of Health (DOH)

The DOH stands ready to assist with all aspects of public health and in the event of a public health emergency, supported by the SEOC and other state departments as required. For current information, see:

<https://health.alaska.gov/dph/Pages/default.aspx>

<https://health.alaska.gov/dph/Emergency/Pages/prepared/default.aspx>

NTAS Bulletin

The U.S. Department of Homeland Security issued an updated National Terrorism Advisory Bulletin on May 24, 2023. The current and expired bulletins can be viewed at the below link.

<https://www.dhs.gov/national-terrorism-advisory-system>

Travel Alerts and Conditions

- **Thane Road Alert: Avalanche Hazard Warning**
- **Prince of Wales Landslides - Travel Between Thorne Bay and Klawock not recommended**
- **Wrangell: Zimovia Highway closed at 11-mile due to landslide**

For current driving conditions, dial 511 or link to <https://511.alaska.gov/>

Barry Arm Landslide / Tsunami Risk

For the latest information on the Barry Arm Landslide and Tsunami risk, click here:

<https://dggs.alaska.gov/hazards/barry-arm-landslide.html>

Earthquakes

United States Geological Service (USGS) Earthquake Information: <http://earthquake.usgs.gov/>

National Tsunami Warning Center: <http://tsunami.gov/>

Alaska Volcanoes

Great Sitkin Alert Level: **Watch** and Aviation Color Code: **Orange**

Bogoslof Alert Level: **Advisory** and Aviation Color Code: **Yellow**

Shishaldin Alert Level: **Watch** and Aviation Color Code: **Orange**

Trident Alert Level: **Advisory** and Aviation Color Code: **Yellow**

For Alaska Volcano updates, go to: <https://www.avo.alaska.edu/>

Air Quality Index (AQI) Advisories

For the most up to date Air Quality Index Advisories:

<http://dec.alaska.gov/Applications/Air/airtoolsweb/Home/Index>

Spills of Oil and Hazardous Substances

The Alaska Division of Environmental Conservation (ADEC) Spill Prevention and Response page is located at:

<https://dec.alaska.gov/spar/>

Alaska Cyber Security Information

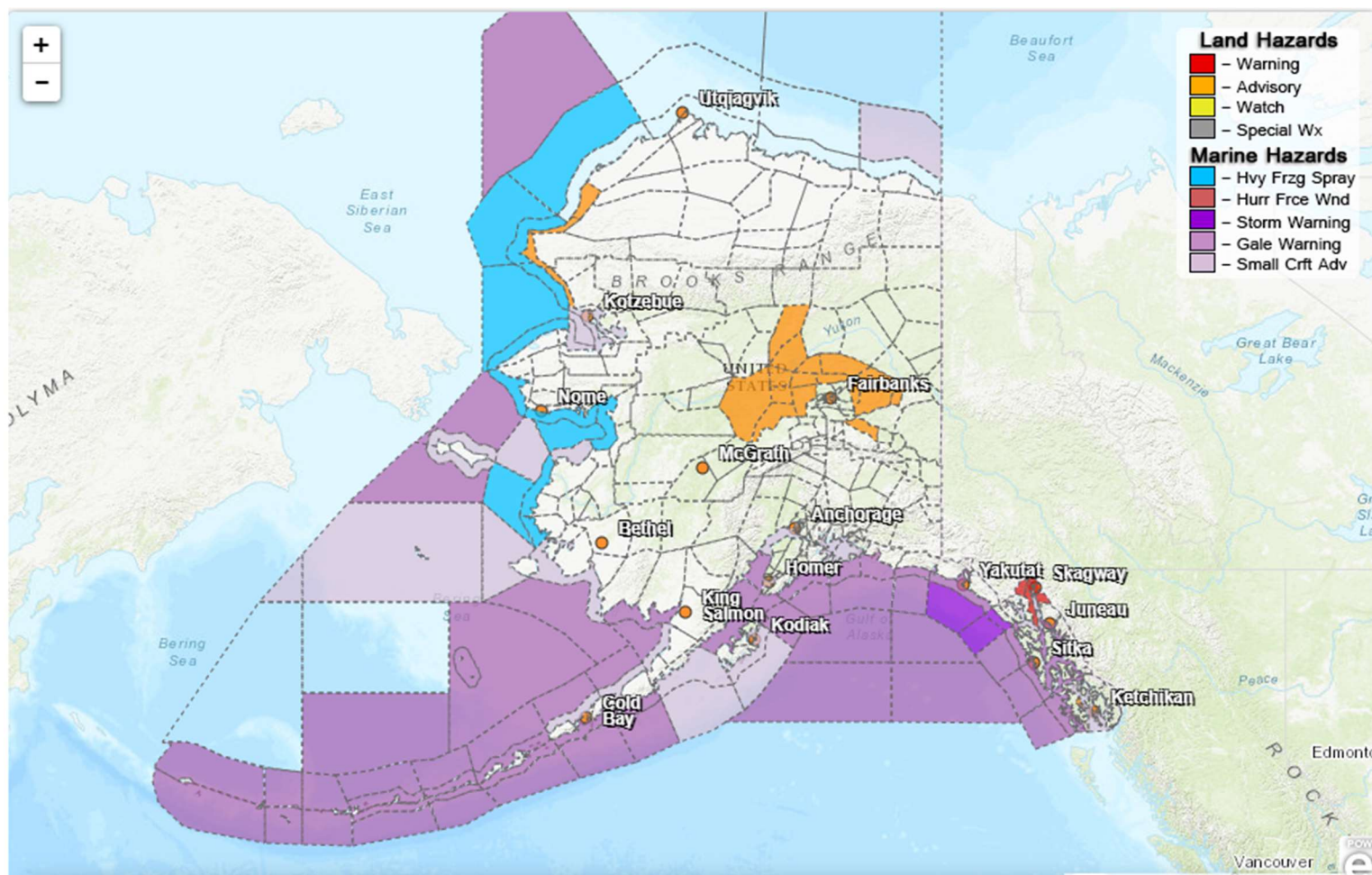
State Employees may sign up for cyber security notifications and alerts at <https://oit.alaska.gov/security>

Cybersecurity and Infrastructure Security Agency (CISA)-Cybersecurity Services and Tools: www.cisa.gov/free-cybersecurity-services-and-tools

Avalanche Hazards:

- Turnagain Pass – Moderate at all elevations.
- Valdez – Moderate @ 1,500FT elevation and above.
- Hatcher Pass not updated, as of Saturday, November 18, Moderate at low elevations and Considerable at mid to upper.

Significant Weather:



High Surf Advisories:

- **Western Arctic Coast; Kivalina and Red Dog Dock; St Lawrence Island** – advisory in effect until 9PM AKST Tuesday.

Wind Advisory:

- **Delta Junction** – advisory in effect until 9PM AKST tonight.

Winter Storm Warnings:

- **Municipality of Skagway; Haines Borough and Klukwan** – warning in effect until 3PM AKST today.

Winter Weather Advisory:

- **White Mountains and High Terrain South of the Yukon River; Upper Chena River Valley; Central Interior** – advisory in effect until 6PM AKST tonight.
- **Dalton Highway Summits** – advisory in effect until 9PM AKST tonight.

For more information and the most current weather, Watches / Warnings / Advisories go to:

<https://www.weather.gov/arh/>

The Next Situation Report will be **November 22, 2023**. A significant change in the situation or the threat level will prompt an interim report. This report is posted on the internet at

<https://ready.alaska.gov/sitrep>.

To register for email distribution, go to <http://list.state.ak.us/mailman/listinfo/dhsem.situation.report>.

Direct questions regarding this report to the SEOC at 907-428-7100 or seoc@alaska.gov